



Maestro active cut supplementary module: cut editor

**Software for autoamatic
sindle balde beam saw**

Strictly reserved to the sales network of SCM

September 2019





cut editor

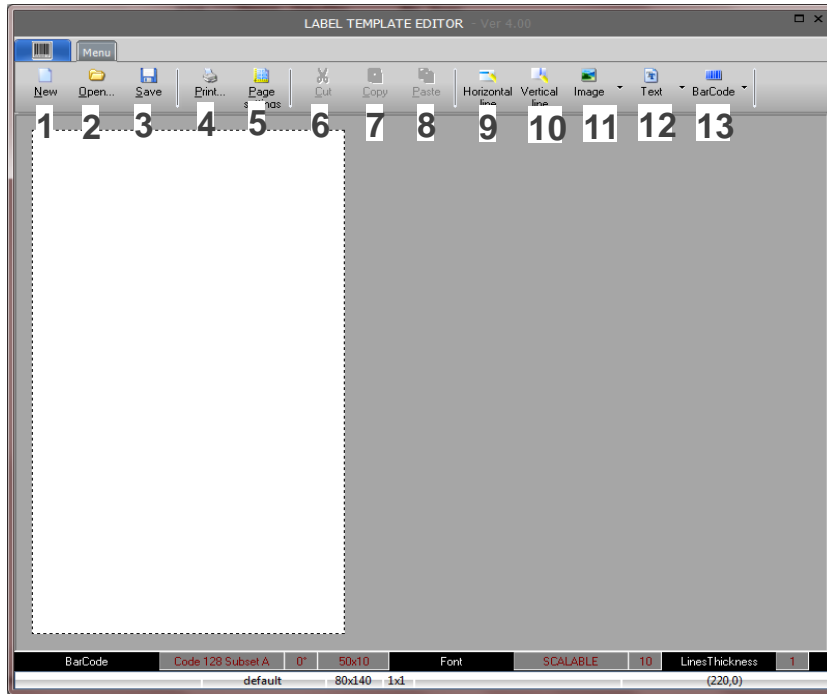
cut editor

Label printing enabling



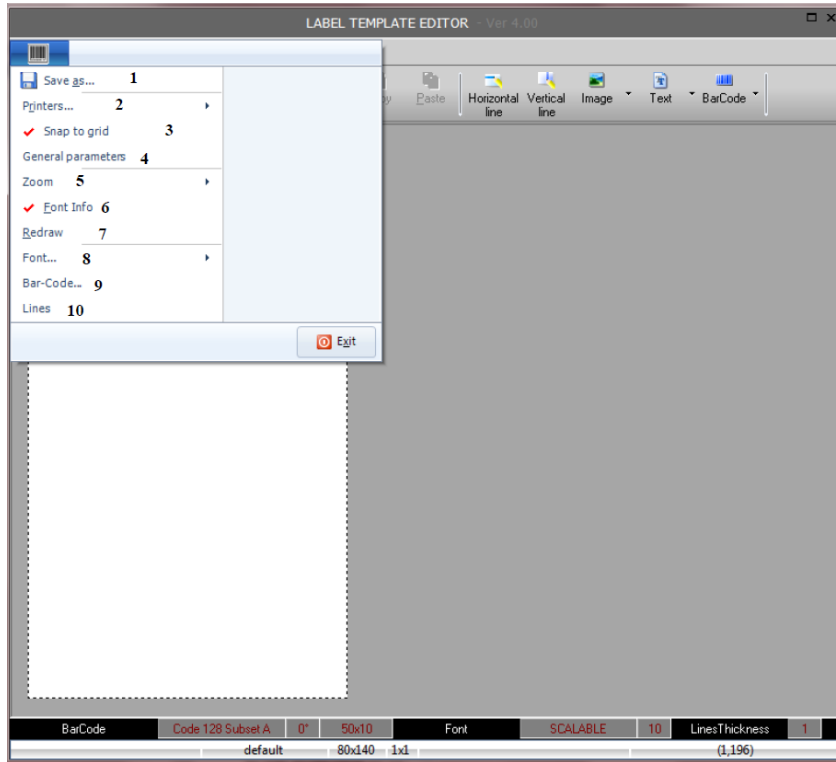
Strictly reserved to the sales network of SCM

Labels editor 1/2



- 1 – Display the white sheet used to create the label
- 2 – Open a previously saved label
- 3 – Save the current label
- 4 – Print the current label
- 5 – Labels layout management
- 6 – Delete selected item
- 7 – Copy selected item
- 8 – Paste selected item
- 9 – Draw horizontal line
- 10 – Draw vertical line
- 11 – Insert image (use the small narrow on the left to select the origin of the datum to insert)
- 12 – Insert text (use the small narrow on the left to select the origin of the datum to insert)
- 13 – Insert barcode (use the small narrow on the left to select the origin of the datum to insert)

Labels editor 2/2



- 1 – Save label with another name
- 2 – Always set the Windows pre-set printer
- 3 – Enable the virtual grid to position the objects
- 4 – Use only to change the language of the labels editor
- 5 – Zoom level used to display the label
- 6 – Delete selected item
- 7 – Label graphic update
- 8 – Access the settings to define the orientation of a text during the insertion
- 9 – Barcode settings
- 10 – Draw vertical line
- 11 – Define the default thickness of the lines



Graphic editor

- Writing a new cutting scheme or modifying an existing one through a graphic tool

Editor Programma

Descrizione: PANNELLO FIERA

Formato: TYPE

Lunghezza: 2100

Larghezza: 1400

Spessore: 18

Swap: OFF

| # | Tipo | Quota | Tot | Resto | Opzioni |
|---|------|-------|-----|--------|---------|
| 2 | Y | 25,6 | 1 | 2192 | |
| 3 | F | 0 | 0 | 0 | |
| 4 | Y | 400 | 1 | 1787,6 | |
| 5 | F | 0 | 0 | 0 | |
| 6 | Y | 25,6 | 1 | 1757,6 | |
| 7 | F | 0 | 0 | 0 | |
| 8 | Y | | 1 | 1353,2 | |

Velocità: 0 m/min
Quota: 990,1 mm

0 m/min
283 mm

0 rpm
-261 mm

15:54

2100 x 400

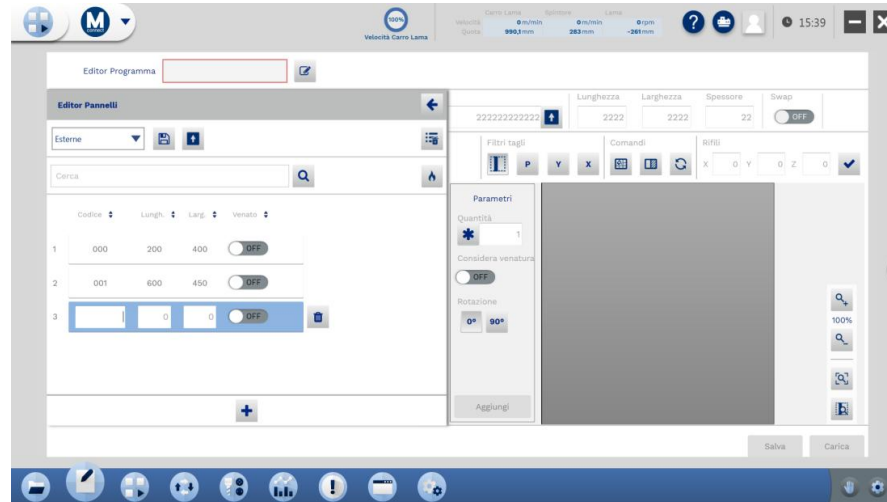
2100 x 400

100%



Panels editor

- Writing a new cutting scheme creating/importing from file the dimensions of the requested panels
(flame-cut management is included)
- External shapes (white) are the ones which can be filled in manually, internal shapes (yellow) are the owner of the scheme (associated to label data or coming from the optimization programme)



Semi-automatic macro mode

Smart graphic mode to execute some operations

Macro disponibili

Parametri Macro

| # | Istruzione | Quota | Rip | Fatti |
|---|------------|--------|-----|-------|
| | | 0 | 1 | 0 |
| 2 | ABS | 2000 | 1 | 0 |
| 3 | INC | 204.40 | 3 | 0 |



**Thanks for your
attention**